

WCHS F3297  
S/N: 160114755

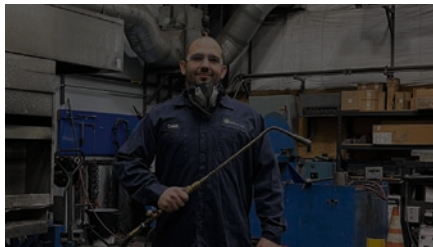


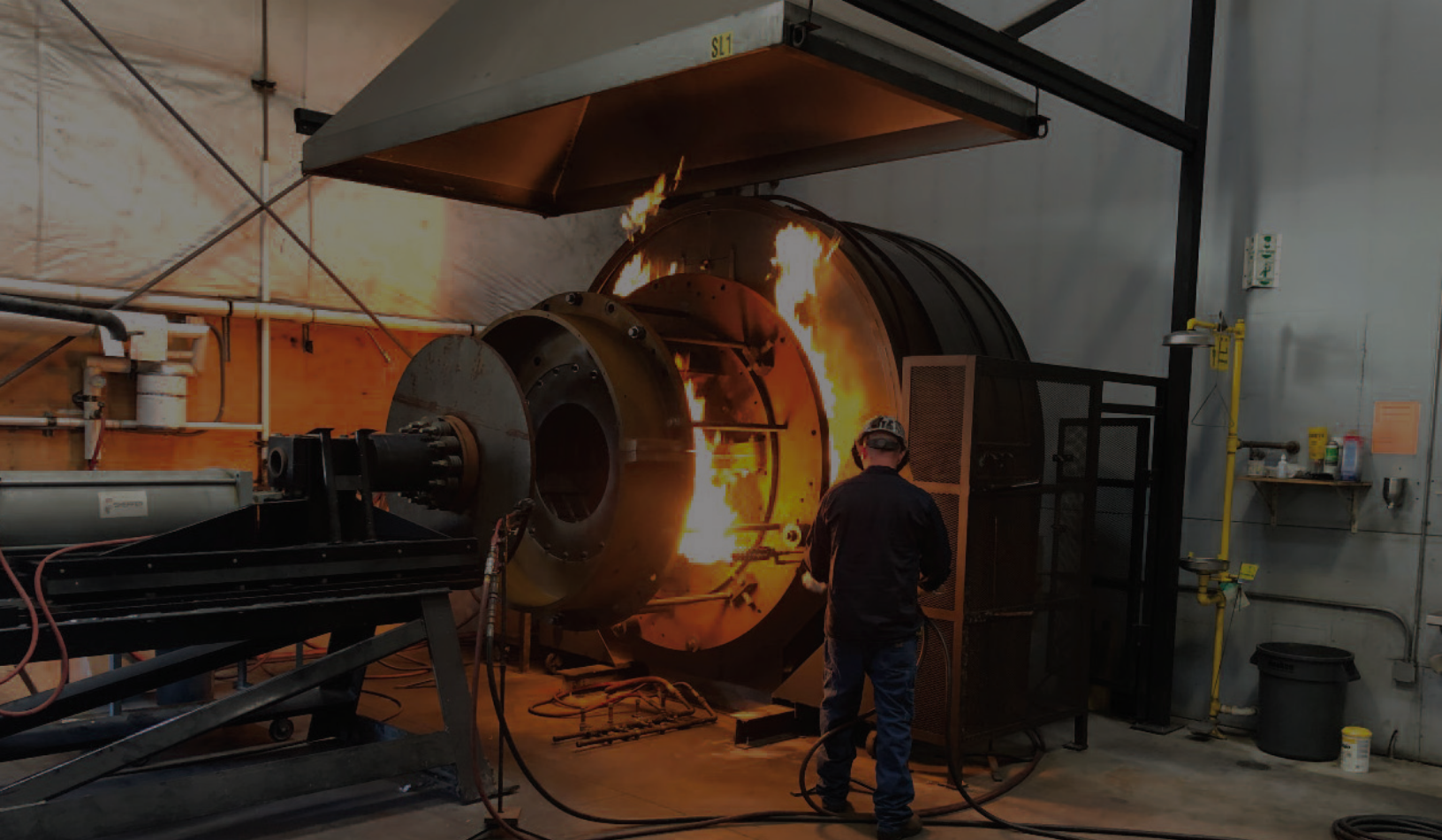
# Expert Bearing Repair & Large Scale Machine Shop

QUALITY CONTROL  
NON-CONFORMING MATERIAL

SAFETY PROTECTS PEOPLE

WE ME





*Our onsite foundry operates one of the largest spin-casting systems for babbitt bearings in the United States, enabling us to service Kingsbury bearings and repair babbitt bearings from other manufacturers.*



Kingsbury Quality

# A Modern Facility Designed to Deliver Superior Quality

If you're looking for a proven team of industrial machinery repair experts who operate some of the largest capacity equipment in the Western United States, Kingsbury is your solution.

Kingsbury's Bearing Repair & Large Scale Machine Shop was built in 2014 to both meet the needs of customers among the most recognized names in American industry and to expand our services to companies like yours.

While Kingsbury is known for its babbitt bearings, our facility goes beyond expert bearing manufacturing and refurbishment. We offer large- and small-scale equipment milling, turning, and grinding. We also manufacture new parts to OEM specifications and reverse engineer parts to meet customer requirements.

Kingsbury's climate-controlled facility includes a 30-ton crane, large-capacity vertical and horizontal CNC lathes, calibrated inspection equipment, grinders, a babbitt bearing work cell and foundry, and everything else you would expect from a premier repair operation.

The facility is strategically located adjacent to Interstates 5 and 80. This location provides convenient and cost-effective access to the Western U.S. and beyond. Sacramento International Airport is just 40 miles away for progress inspections and planning meetings.



*Our facility goes beyond expert bearing manufacturing and refurbishment with full milling, turning, grinding, new-part production, and reverse engineering.*



# Outstanding Resources & Communication.

## **Successful, cost-effective repairs come from a disciplined process carried through from start to finish.**

That means a proven approach, clear expectations, and communication that stays timely and consistent at every stage of the job.

Kingsbury employs nearly 300 people, including engineers and highly skilled craft labor. Repair projects are planned and supervised by specialists with deep, hands-on experience. Work is managed digitally, so project details are easy to access, track, and share throughout the repair.

On the shop floor, portable work tables provide teams with specifications, drawings, and procedures at the point of work. Each task follows defined, step-by-step instructions, with built-in hold points and quality checks. This structure keeps work accurate, traceable, and on schedule, without slowing progress.



## **Kingsbury offers the following in-house services:**

### **Disassembly**

Our team carefully match marks machinery, records as-found condition data, and disassembles and cleans all components prior to inspection. Cleaning methods include environmentally friendly ice blasting as well as traditional sandblasting, selected based on component requirements.

### **Inspection and Testing**

Kingsbury performs detailed visual and dimensional inspections supported by a full range of nondestructive testing methods, including ultrasonic testing, dye penetrant inspection, and hardness testing. Complete condition data can be provided with or without repair recommendations.

### **Reverse Engineering**

For machinery that is no longer manufactured or has been customized for a specific application, our engineers can reverse engineer individual components or complete assemblies. When appropriate, design modifications are recommended to improve reliability, performance, or service life.

### **Expert Machining**

Machining is performed by an experienced team of machinists using large-capacity CNC and traditional equipment. Our lathes, grinders, and mills are capable of holding extremely tight tolerances required for critical rotating equipment.

### **Babbitt Bearing Manufacturing**

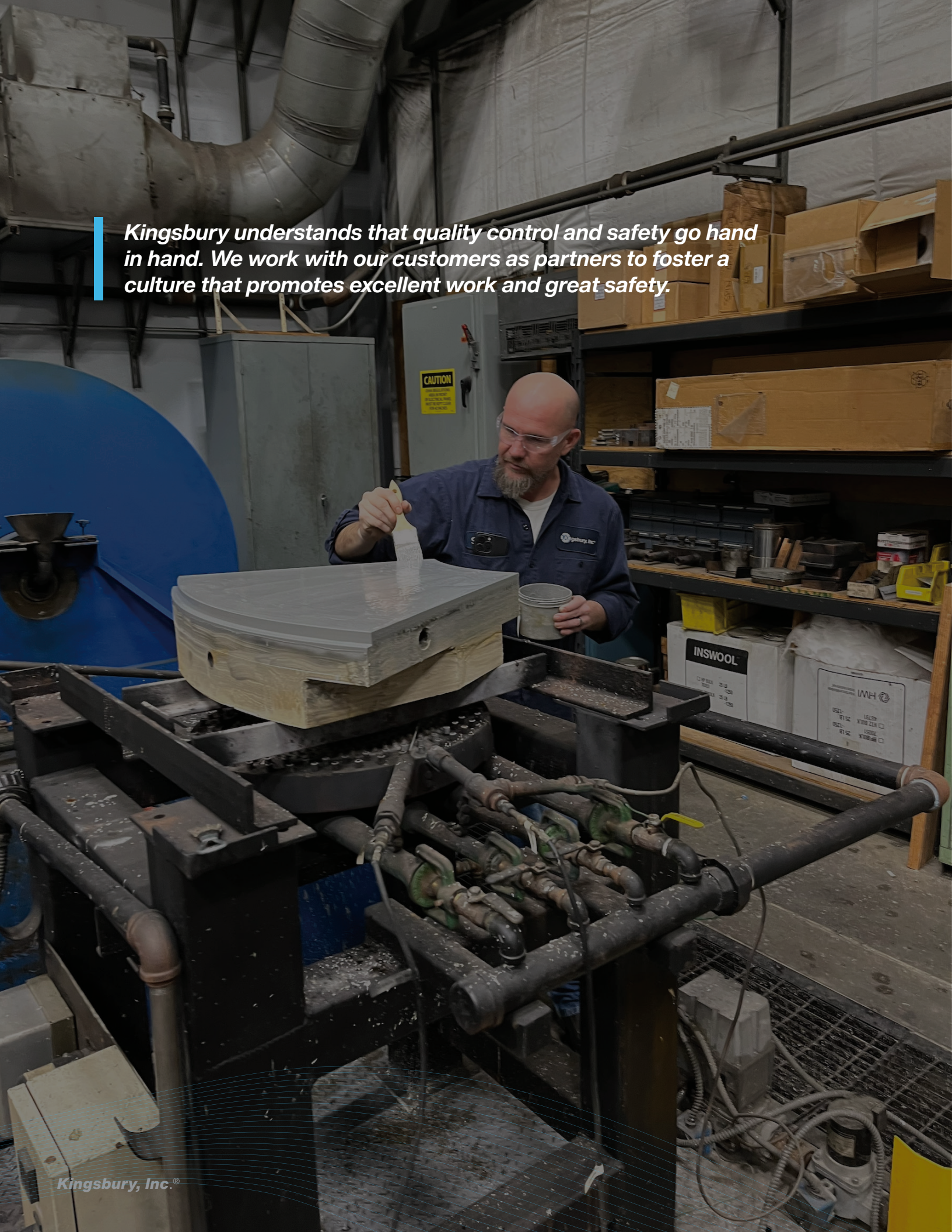
Our onsite babbiting work cell operates one of the largest spin-casting systems for babbit bearings in the United States. In addition to servicing Kingsbury bearings, we regularly repair babbit bearings from other manufacturers.

### **Emergency Service**

When unexpected issues arise, Kingsbury provides 24/7 emergency support. If required, experts can be deployed from multiple locations, and we assist in coordinating additional resources to resolve critical challenges quickly and safely.

### **Long Term Storage**

*Kingsbury understands that quality control and safety go hand in hand. We work with our customers as partners to foster a culture that promotes excellent work and great safety.*



H i g h Q u a l i t y S t a n d a r d s

# Exceptional Quality Control & Safety

## **Kingsbury understands that quality control and safety go hand in hand.**

We work with our customers as true partners to foster a culture that values both exceptional work and safe practices. Unless a customer specifies otherwise, we collaborate to define the measurements and tolerances that matter most to quality. Those requirements are documented, verified, and enforced throughout the repair to ensure they are consistently met.

## How We Achieve Consistent, High-Quality Results

### **Dedicated QC Personnel**

Kingsbury assigns one full-time quality control professional at our West Coast facility, focused exclusively on inspection, verification, and compliance throughout each repair with support from a corporate quality team.

### **High Quality Standards**

We apply our own Kingsbury Standard, which meets or exceeds applicable international, national, and military standards. Unless a customer specifies otherwise, the Kingsbury Standard governs all work.

### **Advanced Tools and Testing**

Kingsbury uses an unusually broad and capable set of measurement and quality control tools, both in scale and precision. These tools support accurate inspection and repeatable results across a wide range of repair conditions.

### **Complete Documentation**

Kingsbury developed quality control forms ensure critical measurements are recorded during incoming inspection and at defined repair milestones. Final documentation includes these measurements at project closeout. Customer supplied forms are welcome, and custom documentation can be developed as needed. Kingsbury is ISO 9001:2015 certified.

### **Maintenance and Care**

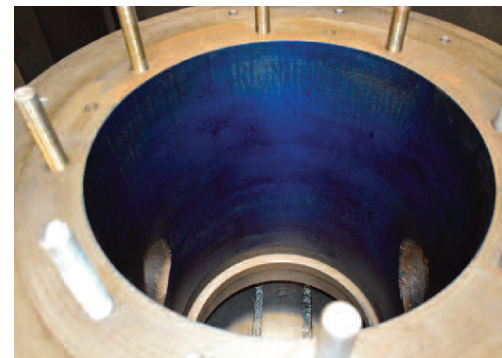
Lathes and supporting equipment are maintained in first-class condition. The shop is clean, well organized, and built to support safe, efficient, and accurate work, with long-term storage available for customer spare components.

### **Safety Specialist Oversight**

A full-time Environmental, Health, and Safety specialist trains and monitors employees. Kingsbury follows OSHA requirements, participates in OSHA 30 training, and actively practices Behavior Based Safety.

### **Risk Assessment**

Job Hazard Analysis and other formal risk assessment practices are standard components of every project.



## Key Equipment Specifications

Measurement in Inches

### **Bullard Vertical Turning Lathe:**

Diameter 124", Swing 136", Vertical 72"

### **Betts Vertical Turning Lathe:**

Diameter 110", Swing 115", Vertical 72"

### **Bullard Vertical Turning Lathe:**

Diameter 110", Swing 120", Vertical 72"

### **King Vertical Turning Lathe:**

Diameter 72", Swing 76", Vertical 48"

### **Heckert Horizontal Boring Mill**

Four-Axis CNC

### **Haas VF8**

Three-Axis CNC

### **Tue-15-5 Vertical Boring Mill**

### **Babbitt Bearing Spincasters (3)**

3" to 94"

### **Lapper 18**

### **Lapper 28**

### **Blanchard Grinder**

Table 36"

Table 40"

### **Granite Inspection Tables:**

up to 96" x 48"

### **Semi-Trailer Access / Loading Pit**

### **Crane:**

30 Ton



## Our Location

**For over a century**, Kingsbury has helped customers extend equipment life, improve performance, and solve engineering challenges in industries where reliability is critical. Whether you need new bearings, retrofits, performance upgrades, or lifecycle support, Kingsbury is your trusted partner.



### **Repair & Service Division**

#### **WEST**

Address: 209 Burns Drive,  
Yuba City, CA 95991, USA

Phone: +1-530-673-6262

Fax: +1-530-673-6266

Email: [repair@kingsbury.com](mailto:repair@kingsbury.com)

[www.kingsbury.com](http://www.kingsbury.com)



### **Corporate Headquarters**

#### **EAST**

Kingsbury, Inc.

Address: 10385 Drummond Road,  
Philadelphia, PA 19154, USA

Phone: +1-215-824-4000

Fax: +1-215-824-4999

Email: [sales@kingsbury.com](mailto:sales@kingsbury.com)

[www.kingsbury.com](http://www.kingsbury.com)